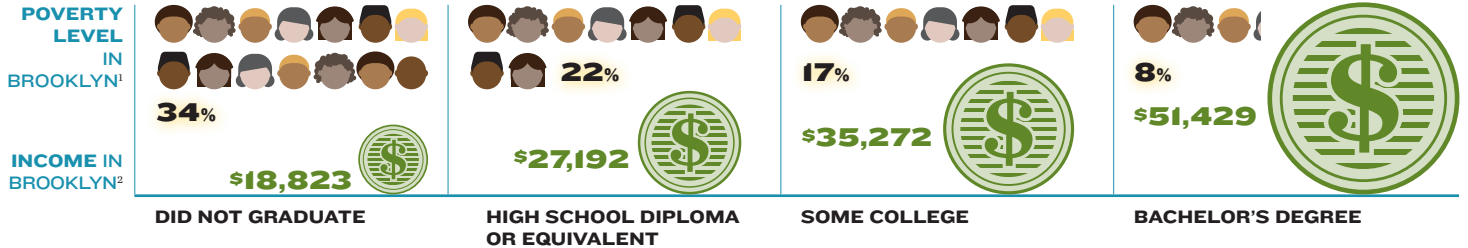




College Access and Persistence

Changing the lifetime trajectory of young people living in poverty in Brooklyn.

EDUCATION IS A STEPPING STONE OUT OF POVERTY.

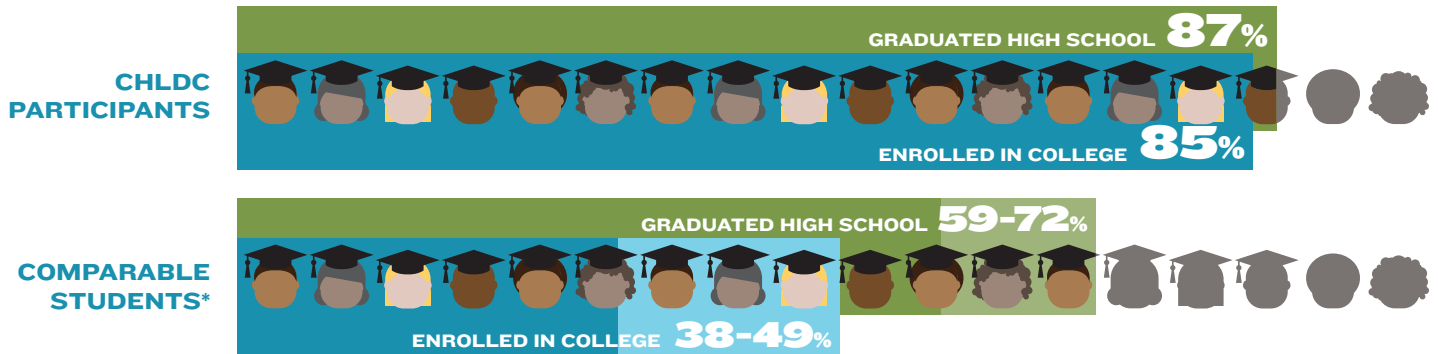


COLLEGE ACCESS PROGRAMMING IMPROVES HIGH SCHOOL GRADUATION RATES, COLLEGE ENROLLMENT AND SUCCESS.

Cypress Hills Local Development Corporation (CHLDC) has developed college access programming through their Student Success Centers (SSCs) at two high school campuses and College STEPS program in a storefront in the community. CHLDC continues to work with graduates to help them enroll and succeed in college, with the ultimate goal of helping students achieve two and/or four year degrees.

CHLDC HIGH SCHOOL GRADUATION AND COLLEGE ENROLLMENT RATES

CHLDC participants have higher high school graduation, college enrollment, and college persistence rates than a comparable group of similar students.



*NYC-defined comparable schools, made up of students from schools most similar to students at CHLDC partner schools (Brooklyn Lab, Academy of Innovative Tech, Multicultural HS and Cypress Hills Collegiate). The comparison group result is an estimate of how the students at this school would have performed if they had attended other schools throughout the city.

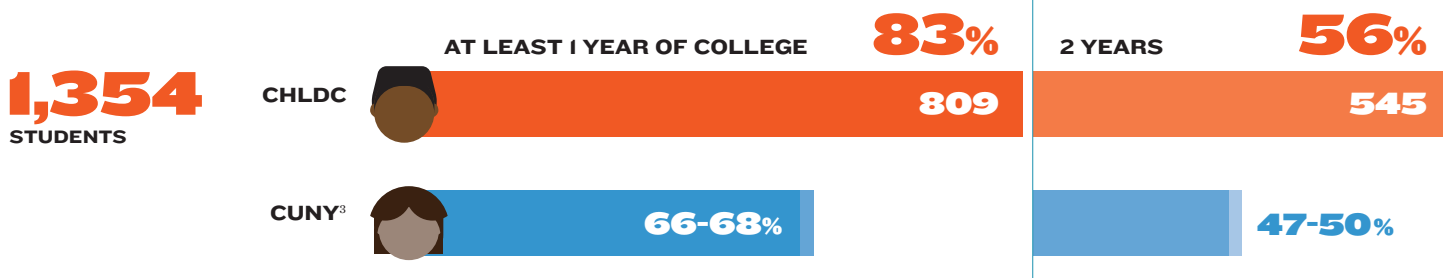
\$815
AVERAGE PROGRAM COST PER STUDENT PER YEAR

323
CHLDC 2017 HIGH SCHOOL SENIORS

ADDITIONAL INCREASED LIFETIME EARNINGS
+\$25,408,284

based on additional increased earnings of \$368,236 before retirement for students with a high school or high school equivalent degree

CHLDC COLLEGE PERSISTENCE



SOURCES

- Poverty status in the past 12 months, 2012-2016 American Community Survey Five Year Estimate.
- 2011-2015 American Community Survey. "Median Earnings in the Past 12 Months (In 2015 Inflation Adjusted Dollars) By Sex By Educational Attainment for the Population 25 Years and Older."
- CUNY 1 and 2 Year College Persistence Rates Average 2006-2015." CUNY Office of Institutional Research.

- 2011-2015 American Community Survey. "Median Earnings in the Past 12 Months (In 2015 Inflation Adjusted Dollars) By Sex By Educational Attainment for the Population 25 Years and Older."



CHLDC is a 35-year-old community based organization and settlement house in the Cypress Hills neighborhood of Brooklyn, New York. We serve over 10,000 residents each year through a broad array of programs. Our services include college access and college persistence services, development of affordable housing, workforce development, adult education programming, afterschool and summer programming for local young people, mortgage foreclosure prevention counseling, community organizing with tenants and students in local schools in response to issues that impact the community, and Cypress Hills Verde, which encompasses healthy food access, urban agriculture and other efforts to make the neighborhood green and sustainable. Together, our programs strengthen the area's physical and economic infrastructure, provide quality educational and social services, and foster local leaders.

625 Jamaica Ave
Brooklyn, NY, 11211
718-388-5454

With community residents leading the way, the mission of CHLDC is to build a strong, sustainable Cypress Hills/East New York, where youth and adults achieve educational and economic success, secure affordable housing and develop leadership skills to transform their lives and community.

cypresshills.org

f t chldc
cypresshills_ldc



Change Capital Fund (CCF), a collaborative of 17 funders, invests in community organizations to increase economic mobility in persistently low-income neighborhoods. Through flexible funding and capacity building, CCF grantees increase program and data coordination, and serve more individuals and families with better outcomes.

changecapitalfund.org